

HCRT1 Antibody (Center)
Purified Rabbit Polyclonal Antibody (Pab)
Catalog # AP21007a**Specification**

HCRT1 Antibody (Center) - Product Information

Application	WB,E
Primary Accession	O43613
Reactivity	Human
Host	Rabbit
Clonality	Polyclonal
Isotype	Rabbit IgG
Calculated MW	47536

HCRT1 Antibody (Center) - Additional Information**Gene ID** 3061**Other Names**

Orexin receptor type 1, Ox-1-R, Ox1-R, Ox1R, Hypocretin receptor type 1, HCRT1

Target/Specificity

This HCRT1 antibody is generated from a rabbit immunized with a KLH conjugated synthetic peptide between 256-291 amino acids from the Central region of human HCRT1.

Dilution

WB~~1:500-1:1000

E~~Use at an assay dependent concentration.

Format

Purified polyclonal antibody supplied in PBS with 0.09% (W/V) sodium azide. This antibody is purified through a protein A column, followed by peptide affinity purification.

Storage

Maintain refrigerated at 2-8°C for up to 2 weeks. For long term storage store at -20°C in small aliquots to prevent freeze-thaw cycles.

Precautions

HCRT1 Antibody (Center) is for research use only and not for use in diagnostic or therapeutic procedures.

HCRT1 Antibody (Center) - Protein Information**Name** HCRT1 ([HGNC:4848](#))

Function Moderately selective excitatory receptor for orexin-A and, with a lower affinity, for orexin-B neuropeptide (PubMed:[26950369](#), PubMed:[9491897](#)). Triggers an increase in cytoplasmic Ca(2+) levels in response to orexin-A binding (PubMed:[26950369](#), PubMed:[9491897](#)).

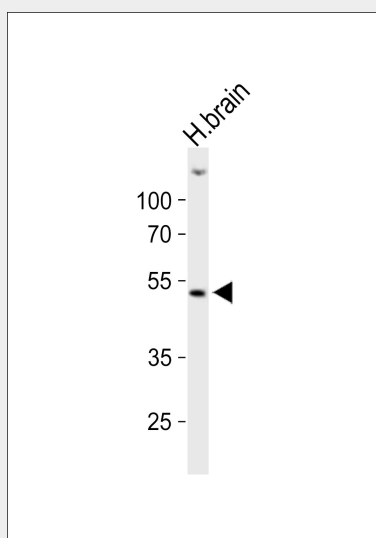
Cellular Location

Cell membrane; Multi-pass membrane protein

HCRT1R Antibody (Center) - Protocols

Provided below are standard protocols that you may find useful for product applications.

- [Western Blot](#)
- [Blocking Peptides](#)
- [Dot Blot](#)
- [Immunohistochemistry](#)
- [Immunofluorescence](#)
- [Immunoprecipitation](#)
- [Flow Cytometry](#)
- [Cell Culture](#)

HCRT1R Antibody (Center) - Images

Western blot analysis of lysate from human brain tissue lysate, using HCRT1R Antibody (Center)(Cat. #AP21007a). AP21007a was diluted at 1:1000. A goat anti-rabbit IgG H&L(HRP) at 1:10000 dilution was used as the secondary antibody. Lysate at 20ug.

HCRT1R Antibody (Center) - Background

Moderately selective excitatory receptor for orexin-A and, with a lower affinity, for orexin-B neuropeptide. Seems to be exclusively coupled to the G(q) subclass of heteromeric G proteins, which activates the phospholipase C mediated signaling cascade (By similarity).

HCRT1R Antibody (Center) - References

Sakurai T.,et al.Cell 92:573-585(1998).
Peyron C.,et al.Nat. Med. 6:991-997(2000).
Olafsdottir B.R.,et al.Neurology 57:1896-1899(2001).
Yeager M.,et al.Submitted (DEC-2001) to the EMBL/GenBank/DDBJ databases.
Ota T.,et al.Nat. Genet. 36:40-45(2004).